

Old Pueblo A

November 2020



Tucson Chapter

Model A Ford Club of America



OLD PUEBLO A



Official Monthly Publication
 Tucson Chapter, Model A Ford Club of America
 7060 E. 21st Street, Tucson, AZ 85710
www.tucsonmodelafordclub.org

ADVERTISING RATES:

Cover Ads.....\$20.00/year

EDITOR:

David Rivard

PO Box 249

Vail, AZ 85641

520-428-4929

modeladude@outlook.com

TUCSON CHAPTER DUES:

\$15/year family or

\$10/year individual

MEETINGS:

Regular meetings are held on the first Tuesday of each month (except December) at 7:30 PM.

Jim Click Ford

6244 E. 22nd Street

Tucson, AZ 85711

MONTHLY OUTING:

Fourth Sunday of the month

or as voted by the

club membership

The Tucson Model A Club is a local chapter of MAFCA:

Model A Ford Club
of America, Inc.

250 S. Cypress Street

La Habra, CA 90631

562-697-2712

Toll free (for orders only, including MAFCA membership):

866-379-3619

www.mafca.com

2020 OFFICERS

President:

David Ramsower

ramsworth@gmail.com

520-661-4493

1st Vice President:

Sindy Osterman

scubamngirl51@gmail.com

651-338-3390

2nd Vice President:

Rey Brown

softtopcoupe@yahoo.com

520-296-2079

Treasurer:

Mike Liebert

hikingmike@aol.com

520-529-8662

Secretary:

Frank Pyrdeck

frankpyrdeck@aol.com

520-870-9017

2020 BOARD OF DIRECTORS

Chuck Thim

Ray Feierstein

Dan Jensen

Tom McWilliams

Ernie Williams

Joe Findysz

Take a Little Trip

Melanie G. Whittington

Traveling in a Model A is one of the highlights of our hobby. Combining an interest in Model As, travel, and era fashion is about the best thing I can think of to experience all aspects of this hobby. Where are you going? Is it for the weekend? What's the weather forecast? A few things to ask yourself before beginning to plan your wardrobe and luggage requirements.

"Each year motoring becomes more and more a favorite pastime as weekends grow in popularity..." according to the June 1931 issue of Good Housekeeping. This sentiment is very similar to the short tours so many of our chapters take each year. Do you and a few Model A friends like to take day trips and pack a lunch? Have a little fun with it! One of my favorite trips involved the Southeastern Touring group and a trip onto the Blue Ridge Parkway. My husband and I packed a lunch and brought our picnic set



Figure 1; Picnic set

along. Add some fried chicken, potato salad, and lemonade for a trip you won't soon

forget. (Figure 1) These luncheon kits were suggested for anyone "motoring much". They are not the easiest to find at antique stores, but I have seen several in my travels. It may look like a suitcase if it is setting on the floor closed. Look a little closer and you may find a treasure.

LUGGAGE
--that will go vacationing
with smart travelers

For Short Trips
Light luggage for
similarity travels is
not a luxury but a
necessity. Call a
suit of the most
fasteners and
buckle, week-end
them and suit cases
are noted for durability.

\$3.95 to \$25.00

For Long Trips
Whether your trip is
by sea or land or a
combination of both,
our new zipper cases
and guaranteed
wardrobe trunks will
withstand the rough
usage of both Euro-
pean and American
travel.

\$15.00 to \$100

Motoring Trips
--are incomplete
--without motoring
luggage meets every
necessity of the
modern traveler. Trunks
and cases are equip-
ped to facilitate motor
travel here and
abroad.

\$10.00 to \$65.00

The importance of correct luggage cannot
be over-emphasized. See our selection at once.

The Regal Company
36 WEST MARKET STREET
Luggage the Acceptable Gift for Commencement.

Figure 2; York Daily Record, July 1927, "new zippered cases"

"Talon Hookless Fasteners," "slide fasteners" or "Zip-O-Grips" were all names for what we would call a zipper. These started showing up in luggage before the Model A era. Here is an ad from July 1927 in the York (PA) Daily Record. (Figure 2) The same ad, two months earlier, from Austin, TX did not mention the "new zippered cases" noted in the "For Long Trips" section.

(continued on next page)

Take a Little Trip

Melanie G. Whittington

Of other interest is the mention on short trips using “light luggage for feminine travelers”. Not only were motoring trips becoming commonplace, the ads were focusing on females and the needs of traveling with multiple dresses, shoes, and hats.

“Brimmed hats having returned to fashion importance, a large hat box is required, as proved by the Mendel-Drucker model, covered in Scotch tweed duck.” Also shown is the Oshkosh duffle bag of orange and red striped cord duck which is great for shoes. In the lady’s hand you see a Zip-O-Grip handbag made of bright colored goat skin. At her feet is the Revelation suitcase of black cobra-grained cowhide with locks and adjusts to 14 sizes.

The Seward Aero-Pak suitcase, to the far left, included wardrobe conveniences. Hanging over the Seward is a Snuggle Rug of English plaid woolen, which, on motor trips, is a “wise precaution”. This rug is bag shaped and uses a Talon Hookless Fastener. (Figure 3)

Next time you travel in your Model A, think about your luggage and packing for the era. Many of these suitcases, duffles, and trunks can be found on eBay or in antique stores, for a decent price. Even if you only use it as a prop in your “A,” or for your next trip down the runway at a fashion judging event, you’ll be adding a little more authenticity to the occasion.



Figure 3, Luggage
from June 1931
Good Housekeeping

A Fire Extinguisher for Your Model A

Fire extinguishers are like first aid kits — everyone knows that they should have one, but almost no one does. It's just one of those things that we never seem to get around to — deciding which one to get, figuring out where to put it so it's handy but not in the way, and periodically making sure it's not expired or that it doesn't need replenishment.

I recently learned about a unique fire extinguisher that seems perfect for a Model A (or any other car, really, but this is a Model A newsletter). It's about the size of a large road flare (you carry those too, right?), but it will never expire and it will discharge for 50 seconds once you activate it. It works on all major fire classes (A, B, C and K), including cooking oil and grease fires. It doesn't create any toxic gases and it won't leave any residue. Jay Leno reviewed it (complete with demonstration) on Jay Leno's Garage. You can watch the video at <https://www.youtube.com/watch?v=oBjXecsF860>.

The company which makes and sells it is Element Fire Extinguishers. Their E50 extinguisher (for home and auto) is \$80, plus \$10 for shipping to Tucson via UPS Ground (although shipping for orders over \$99 is free, and I'm pretty sure you could use a second one in your home or your other car anyway). Yeah, that ain't cheap, but I'll bet you'd be willing to pay that if your Model A caught fire and someone offered you one on the spot for that price. Consider it a form of insurance. Tell Santa you want one for Christmas this year. He (or you, if you're playing Santa this year) can order it online at <https://elementfire.com>. It comes with a standard mounting bracket, but they also offer extra mounting brackets, including a magnetic mount if you don't want to drill any holes in your Model A (mine has too many holes already).



Use This



Not This



PAINTING WHEELS

If you are painting your wheels and don't want to remove and reinstall the tires, here's a tip for masking the tires.

- deflate the tube
- break the tire beads from the wheels
- cut a "donut" from a sheet of heavy-duty plastic. The center of the donut is an 18" diameter circle and the outside of the donut is 32" (for 19" wheels). For 21" wheels, add 2 inches to these dimensions.
- Stretch the donut over the wheel allowing the plastic to drop down into the drop center of the wheel. The donut will cover the tire and can be taped in place with masking tape.
- Now, do the same thing with another plastic donut on the other side of the wheel.

ONE CAUTION: don't use the plastic donuts for priming and then for color coat painting (paint peels easily from the plastic and flaked paint will mess up your job). Make donuts for each paint procedure.

PREVENTING PAINT POPPING

If you have trouble with freshly painted wheels "popping the paint" when the lug nuts are tightened, "mask" the holes in the wheels with a set of lug nut spacers held in place with small strips of body caulking material. After the paint job, these spacers can be carefully removed. A light coating of lubricant on the tapered part of the lug nut will help prevent "popping the paint."

Submitted by Gene R. Bassage Palmyra, New York

EVENTS CALENDAR

Due to the current pandemic and associated social distancing requirements, our club outings and monthly general meetings have been temporarily suspended. We will resume our usual club activities as soon as the public health situation permits. Evaluation is being done on a month-by-month basis. Nothing is currently scheduled for November or December.

Meanwhile, our monthly newsletter (the one you're reading now) will continue as usual with Model A articles, news and items of general interest to Model A club members.

Club announcements will appear in the newsletter (see below) and be sent out via email to all club members who have provided their email address. If you're not already receiving club announcements from Ray Feierstein via email and want to be included, please email Ray at sanrays@msn.com and ask to be added to the list.

Club News

The Board of Directors met in October to review the current situation. They would like to share the following news and announcements with the membership:

1. The Globe overnight trip will be postponed until sometime next year.
2. Reports of voluntary and unofficial activities will continue to be distributed in the newsletter and via email (see Events Calendar notice above).
3. The current club Officers and Board will continue to serve through 2021, so no annual membership meeting or election will be necessary this year.
4. The annual Holiday Banquet (in December) will not be held this year.
5. Hotel Congress has decided that the annual Dillinger Days car show (in January) will not be held in 2021.
6. We will reserve the date and space for our annual White Elephant event in case it will be possible to hold it as usual in late February. A final decision will be made closer to the date.
7. **All 2020 club memberships will automatically be extended through the end of 2021, so no dues for 2021 will be collected from current members.**



Tucson Winter residents Pauline Bowser and David Scalia chose Model A Era costumes for Halloween this year and wanted to complete the picture with a Model A. Here they are with the loot and their getaway car after “visiting” the Vail Post Office.

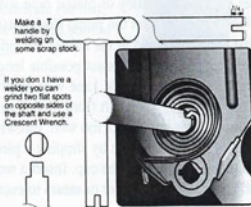
TINY TIPS



WINDOW REGULATOR SPRING TOOL

Sometimes a window regulator spring will either break or become so weak that it makes it hard to roll up the window. Installing a new spring can be difficult and also dangerous.

Take an old distributor shaft and weld on a T handle made from rod stock. Grind down the slotted end so the slot is only 1/4" deep. Put the regulator in a vise and wind it until the lift arm is all the way up. This is the position in which the spring is least compressed. Hook the outer hook of the spring and insert the tool in the center. Turn the tool to compress the spring until it fits into the slot. Release the tool. Tap the spring into position with a hammer.



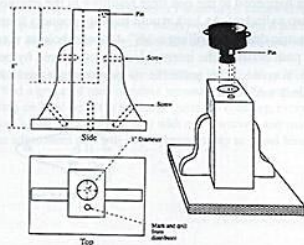
Make a T handle by welding on some scrap stock.

If you don't have a welder you can grind two flat spots on opposite sides of the shaft and use a Crescent Wrench.

BUILD A DISTRIBUTOR WORKSTAND

In the process of rebuilding several Model A distributors, I have developed a workstand which has proven to be very helpful. The distributor casting (with the upper shaft in place or removed) can be mounted at a convenient work height and be held securely without the use of a bench vise. The stand consists of an upright portion (3" square) with a 1" hole drilled vertically to a depth of approximately 4". A second and smaller hole is drilled in the top of the upright to accept the index pin on the casting. When in place on the stand, the distributor is held securely and will not turn during restoration. A base is secured with a wood screw and glue as well as two supports for additional strength. The whole project can be constructed of scrap wood, a few screws and wood glue in less than an hour. It may not revolutionize the hobby, but it does make this job a lot more convenient and protects that metal casting!

Distributor Workstand



Nov 12 1938

Illustration - Harry Wilson

Submitted by Donald R. Geddis, Summit, New Jersey

November



- Nov 5 – Virginia Doty
- Nov 7 – Tom McWilliams
- Nov 9 – Teta Vagasky
- Nov 15 – Carey Kent, Sr.
- Nov 16 – Vic Borg
- Nov 16 – Buzz Davis
- Nov 17 – Dave Tucker
- Nov 21 – Mike Fehniger
- Nov 21 – Margaret Horton
- Nov 25 – Don Johnson
- Nov 25 – Regina Lundberg

NEXT MEETING:

To be scheduled as soon as public health conditions permit. See page 7 for more information.



Jeffrey & Joy Kiviat
Tucson
1929 Tudor

Veterans Day

Honoring All Who Served



Happy Anniversary

- Nov 1 – Bob Karn & Christina Laukaitis
- Nov 5 – Andy & Kim Duvall
- Nov 16 – T.K. & Laura Mohr
- Nov 17 – Allen & Marianne Elvick



Jim's Tech Tip

by Jim Cannon

Removing Rear Wheel Hub/Drum

The rear hubs and drums are bolted on to the tapered axle shafts quite tightly. It is not always easy to get them off when you need to inspect the brakes or check the rear wheel bearings. Don't let this put you off.

You can buy a special "hub puller" that is designed to help get the hub off of the axle. It uses a large bolt that you screw in to press against the axle, and the puller pulls on the hub.

Some Model A hubs were made with a ridge that sticks up, away from the hub body. The puller connects with that ridge. Other hubs were made with a groove machined down into the hub. The puller goes down into that groove and pulls as you tighten the bolt.

Some pullers are specific to the style hub you have (ridge up or groove down) so before getting a tool, you should remove a wheel to see what kind of hub you have to be sure to get the right puller. Other pullers are designed to work with either style hub, which is handy -- so you might want to look for one of them.

When using the puller, it is hard to keep the drum from turning as you tighten the bolt on the puller. Put a wheel lug nut on the drum temporarily and put a 13/16" box-end wrench on it. Press down on that wrench while you lift up on (tighten) the big bolt in the puller. The wrench will jam against the hub and stop the drum from turning as you tighten the bolt.



When using the puller, tighten the big bolt, then tap the head of the bolt with a hammer. Tighten the bolt again, then tap with a hammer again. Repeat this until the hub pops free of the tapered axle.

Removing the rear drums is a pretty common task for servicing a Model A, so it is worth investing in a hub puller tool. It makes the job easier and helps you get back on the road quickly to Have a Model A Day!

Jim

MAFCA Invites You to the **2021** National Tour

June 20 - 25

2021

North Conway, NH

Sign up for Early Bird Newsletter
whitemountainadventure2021@gmail.com

Hub and Spoke Tour Format

Enjoy roads less traveled, taking in peaceful surroundings and breathtaking views of all that the Granite State offers

Visit:

- Mount Washington Auto Road
- Kancamagus Highway
- Clark's Trading Post
- Conway Scenic Railway
- Settlers Green Shopping Outlets
- Mount Washington COG Railway
- Mount Washington Cruises
- Castle in the Clouds



(background watercolor courtesy of
www.whitemountainart.net)

Hosts:

New Hampshire Lakes Region Model A Club



www.2021mafcanationaltour.com

www.facebook.com/groups/942306399533378

Wake up to mountain views at the premier White Mountain resort, relax with a craft cocktail, and shop to your heart's content.

HOST HOTEL

North Conway Grand Hotel

72 Common Ct., North Conway, NH 03860

800-055-1452 / 603-356-9300

code: National Model A Tour 2021

Room Rates start at \$129/night plus taxes / Reservations after May 21, 2021 accepted at group rate based on hotel availability

A WHITE MOUNTAIN ADVENTURE

For Sale: Model A-Friendly Trailer

Special member pricing: asking \$850. (Model A in photos not included, in case you have to ask).

Call Tom McWilliams (Tucson)
520-240-4589

Tkmcw2@gmail.com



For Sale: 1930 Model A Ford "Station Wagon"

1930 Model A Ford Station Wagon. Started life as something else that had been made into two door wagon when I purchased it. Totally restored: Engine by Reeds Machine, Rear end by Tom Endy, Mitchell overdrive. Leakless water pump. Sliding front windows, sliding middle side windows, full rear side windows, full upper and lower tailgate 6 volt system with alternator. Great driver. Wonderful for touring. \$14,000. Email for more pictures or questions:

Dan Adelman maf1930@gmail.com 714-717-9321 Scottsdale, Arizona



For Sale

1930 Ford Model A Restored Chassis - Drivable chassis with title. Powder coated frame, remanufactured engine, rebuilt differential and transmission, new clutch disk and rebuilt pressure plate, cast iron brake drums, hydraulic shocks, new front spring, new radiator, powder coated wheels, and new tires. \$7,000 OBO. Call Bill Richardson (Marana) at 520-600-8104 or email wfrichardson@reagan.com.



For Sale

1930 Ford Model A Coupe Body – Body, front fenders (originals), new rear fenders with new running boards and splash aprons, hood, radiator cowl, deck lid, body wood kit, and front window with new glass. All sheet metal repair work professionally done with leaded solder. \$9,500 OBO. Call Bill Richardson (Marana) at 520-600-8104 or email wfrichardson@reagan.com.



No Dues are Due!

Looking for some good news after everything that's happened in 2020? You came to the right place! All current 2020 Tucson Model A Club memberships will automatically be extended through 2021 at no additional cost. Woohoo!

(See page 7 for more club news and announcements)

Tucson in the 1930's



Sunshine Grocery at 803 E. Helen St., Tucson, ca. 1930s. The building is still there at the corner of Euclid and Helen. — Arizona Historical Society

Thank you to Our 2020 Club Sponsors

Jim Click Ford

Shorty & Isabel Allison

Mike & Ann Liebert

Scott & Cathy Parsons

Chuck & Lynn Thim

Elizabeth McCoy



CONSTRUCTION CO., INC.
CONTRACTOR LIC. #072149

Cellular Phone
(520) 982-8965

Email
Sapcon@aol.com

“SHORTY”
LELAND ALLISON
President

Phone: (520) 747-4934
Fax: (520) 571-8688
3731 S. Chrysler Avenue
P.O. Box 27106
Tucson, AZ 85726-7106



Ace Hardware Stores Inc.

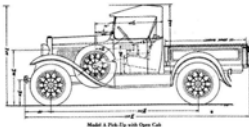
6959 E. 22nd St.
Tucson, AZ 85710
PHONE: (520) 747-9473
CELL: (520) 954-0372
FAX: (520) 747-1290
EMAIL: joe@135hardware.com

JOSEPH T. FINDYSZ
President

Coolest Hardware Store on the Planet 2016

Old Cars R&R

Repair, Restoration, and Maintenance
Rich Whalen



520-203-1784
richwhalen@live.com

11863 N Centaurus Pl
Tucson, AZ 85737



Tucson's Most Reliable & Complete Independent Repair Facility.
Nissan, Honda & Toyota Mechanics.

Andy Neal Jr.

Servicing
Nissan, Honda, Toyota

Model T's and Model A's

560 E. Fort Lowell Rd. • (520) 622-3315

LEVER SHOCKS REBUILT BRAKES SLEEVED AND REBUILT

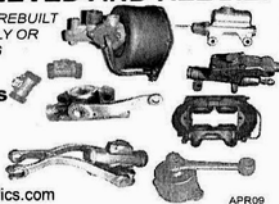
EXCHANGE OR YOURS REBUILT
BRAKES: SLEEAVING ONLY OR
COMPLETE REBUILDING
FAST SERVICE

Apple Hydraulics

1610 Middle Road
Calverton, NY 11933

1-800-882-7753
(631)369-9515

<http://www.AppleHydraulics.com>



APR09

M M MITCHELL MANUFACTURING



Steve & Cyndi Mitchell

Mitchell MFG.
530-458-4500 800-859-2088
www.mitchelloverdrivemfg.com

MODEL A FORD
SYNCHRONIZED-TRANSMISSION FORD OVERDRIVES/UNDERDRIVES
VINTAGE CAR OVERDRIVES 1928-1948

P.O. Box 925 1157 Parker St. Colusa, CA 95932

ARIES MUFFLERS & PARTS

ORIGINAL MODEL A FORD EXHAUST SYSTEMS
MADE PRECISELY TO THE FORD DESIGN

ALSO STATION WAGON TAIL PIPES AND
FORDSON TRACTOR MUFFLERS(1917-1936)

AMUFFLER.COM JDAVIS@AMUFFLER.COM
650.279.6609

CLING'S

Send \$15.00 for booklet on
How to Prepare 1939-1948
Hydraulic Backing Plates

AFTERMARKET PRODUCTS, INC.

Specializing In Hydraulic Brakes for Model A's
Serpentine Pulley System for Model A & B
V8 Transmission Adapter (for L & R Hand Drive)

12452 S. 71st St. • Tempe, AZ 85284-3108
(480) 777-1202 • Email: dcmcl202@cox.net
www.clingsaftermarket.com

The World's Largest Selection of 1909-31 Ford Parts

Snyder's ANTIQUE AUTO PARTS

12925 Woodworth Rd. • New Springfield, OH 44443

Toll Free Ordering (888) 262-5712

or FAX (888) 262-5713

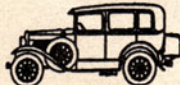
Order On-Line @ www.snydersantiqueauto.com

FREE Fully Illustrated CATALOG
\$10.00 outside the U.S., Canada, & Mexico



ARIZONA MODEL A, L.L.C.

- NEW PARTS
- USED PARTS
- SERVICE
- RESTORATION
- HOUR: TUES-FRI 9-12, 1-5
SAT & EVES BY APPOINTMENT



SAMUEL P. GUTHRIE

15838 S. GILBERT RD., CHANDLER, AZ 85225
(480) 782-0266

BRATTON'S ANTIQUE AUTO PARTS

1606 Back Acre Circle
Mount Airy, MD 21771

800-255-1929 Phone
www.brattons.com

800-774-1930 Fax



JAY BEES
Auto Services



Jacqui Harry
Owner

790-6035

M-F 8am-5pm

5070 E. 22nd St. • Tucson, AZ 85711
www.jaybeesautoservice.com

Mike's "A" Ford-able Parts

Mike Butcher



124 Model A Drive, Maysville, GA 30558

email: mike@mikes-afordable.com - www.mikes-afordable.com

Fax: 706 652 2492 - Phone: 706 652 3866

1 888 TRY MIKE (879 6453)



Specialising in 1928 - 1931 Model A Ford Parts

RUSTY LUGS

SPECIALIZING IN MODEL A'S

Amanda Uthe
Owner



360-887-3346

Rustylugparts@gmail.com

8021 Ne 142nd Ave

Vancouver, Wa 98682

Hours: M-F 9am-5pm

RustyLugParts.com

**7060 E. 21st Street
Tucson, AZ 85710**

First Class

Jim Click Ford

Sponsors the Tucson Chapter

Model A Ford Club of America

